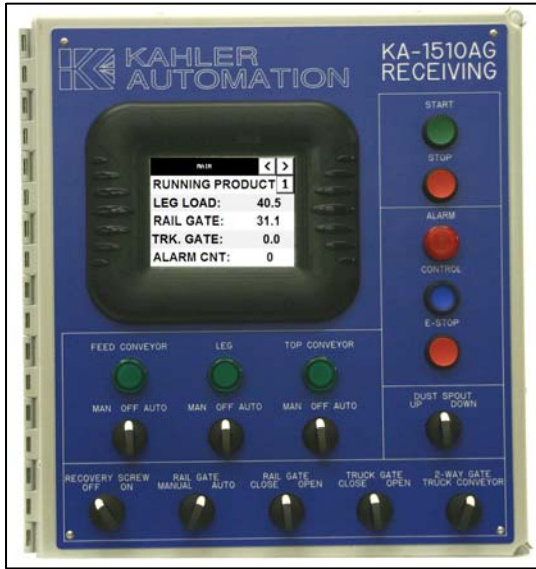


DRY FERTILIZER BUILDING CONTROLS



RAIL RECEIVE CONTROL PANEL

This unit monitors all functions of the receiving equipment. The drag conveyor, bucket elevator leg and transfer conveyor are all continuously monitored for speed, and the bucket elevator is monitored for amp draw. All start-up and shut-down sequences are controlled by the PLC.



RECLAIM & DISTRIBUTION PANEL

This unit monitors the speed of each bucket elevator leg. If an error condition arises, the unit will sound the audible alarm, and shut the equipment down using the automatic sequenced shutdown program.



**KAHLER
AUTOMATION**

RECEIVING CONTROL SYSTEM - KA1510AG

Controls Overview:

Touch Screen Display/Keypad showing the following:

- Bucket Elevator Current (Amp) draw
- Shaft Speed Error for Belt Conveyors 1 & 2, and Bucket Elevator 1
- Safety Switch Error for Belt Conveyor 1 & 2

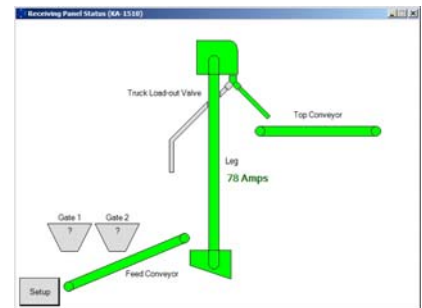


Manual/Off/Automatic Switches for the items (motors) controlled are standard. The system will interlock the Belt Conveyors and Bucket elevator. Based on the monitoring equipment selected, if an error condition arises, the appropriate staged shutdown will be performed, with digital indication to the operator of the fault. A position sensor and display will allow the control to preset and vary the opening of the truck and rail receive hopper gates (up to 6 unique products) for maximum capacity and efficiency.

Features Include Current Level Monitoring and Control for Bucket Elevator 1

Options:

- Current Sensors for Belt Conveyors 1 & 2
- Computer Screen Graphics



RECLAIM & DISTRIBUTION SYSTEM - KA1521

Controls Overview:

Controls and monitors the following

- Reclaim Bucket Elevators 2 & 3 Current (Amp) draw
- Shaft Speed Error for Bucket Elevators 2 & 3
- Pressure Switch Error for Drag Conveyors 1 & 2



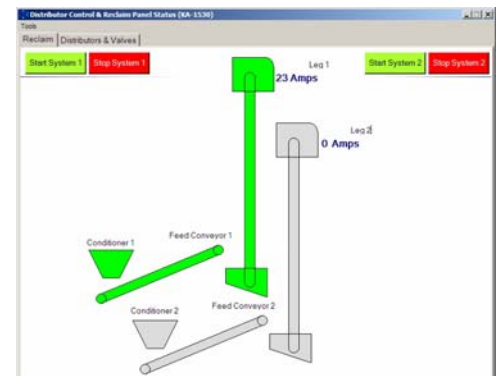
Manual/Off/Automatic Switches for the items (motors) controlled are standard. The system will interlock the Conditioners, Drag Conveyors and Bucket elevators. Based on the monitoring equipment selected, if an error condition arises, the appropriate staged shutdown will be performed, with digital indication to the operator of the fault. The system includes current level monitoring and control for Bucket Elevators 2 & 3

Options:

- Current Sensors for the reclaim Drag Conveyors
- Computer Screen Display & Shutdown Software

Additional Options:

- Hot Bus Bearing Temperature Sensors
- Hot Bus Rub Block Sensors
- Motor Control Centers
- Dry Tower (Blend & Bulk) Automation



**KAHLER
AUTOMATION**

808 Timberlake Road
Fairmont, MN 56031
(507) 235-6648

www.kahlerautomation.com