

FDS-2650

FLUID DISPENSING SYSTEM



AUTOMATED LIQUID BLENDER WEIGHING AND MIXING SYSTEM

The Kahler Automation FDS-2650 weighing system is designed to blend fluids and dry products from large bulk tanks for retail delivery. The system uses fluid pumps which are electronically interlocked to a combination scale/measuring tank. The system is operated from a user friendly input keyboard. The selected product is listed on the display terminal where the user enters the information to complete the order. Entries include customer name, product name, pounds or gallons desired, dispense location and vessel or additives. The system will then automatically control the related pumps, valves and conveyors to quickly and accurately dispense the batch requested. Built in diagnostics are monitoring the system for empty bulk tanks, closed valves and other operational problems. Initial setup allows all important data to be entered into the memory of the system. Product name, weight per gallon, anticipations and automatic air purging may be programmed individually for each product to be dispensed. Measuring tanks are available in various capacities.

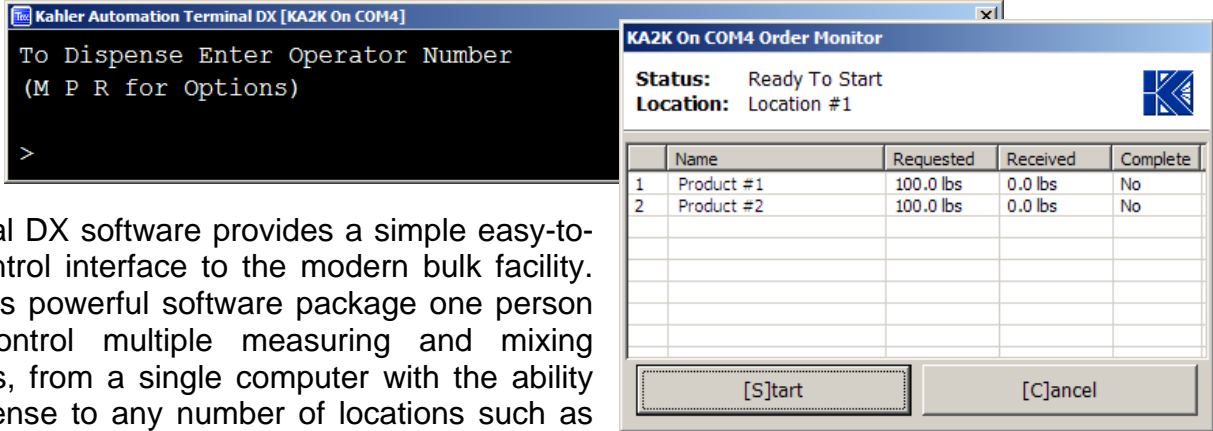
Manufactured by:

Distributed by:



**KAHLER
AUTOMATION**

TERMINAL DX SOFTWARE



Terminal DX software provides a simple easy-to-use control interface to the modern bulk facility. With this powerful software package one person may control multiple measuring and mixing systems, from a single computer with the ability to dispense to any number of locations such as truck loading bays, blenders and shuttle filling areas. Once an order is complete transaction information is stored on the computer and a ticket is printed. Transaction information can be accessed at a later date and may be exported for use in other software applications. Terminal DX also provides the ability to create, store and use recipes that are automatically scaled for any requested quantity. Recipe details can be included or concealed on transaction tickets.

User Friendly

Terminal DX utilizes a simple easy-to-use prompt interface. The user is prompted for information as it is needed. Orders are created by selecting products (or functions) and their corresponding quantities. As orders are created a list of products (and functions) is shown to aid the user.

Recipes

One of the most powerful features of Terminal DX is its recipe capabilities. Using Terminal DX the user can create, store and utilize recipes. Recipes are based on a ratio system.

When this recipe is selected in an order the quantity requested for the recipe will be divided up among the ingredients based on their percentages. If the request for the recipe were 400lbs the quantity of each product would be as follows:

Example Recipe:

Product	Percentage
Product #1	20.0%
Product #2	40.0%
Product #3	29.5%
Product #4	10.5%
Total	100.0%

Product	Percentage	Request
Product #1	20.0%	80 lbs
Product #2	40.0%	160 lbs
Product #3	29.5%	118 lbs
Product #4	10.5%	42 lbs
Total	100.0%	400 lbs

Transaction Data

Since transaction data is stored on the computer a ticket may be reprinted at any time. Transaction data is stored in a database that may be accessed for the creation of specialized reports. Information from the database may also be exported to a comma-delimited file that is usable by many popular spreadsheet applications.



**KAHLER
AUTOMATION**

808 Timberlake Road
Fairmont, MN 56031
(507) 235-6648

www.kahlerautomation.com